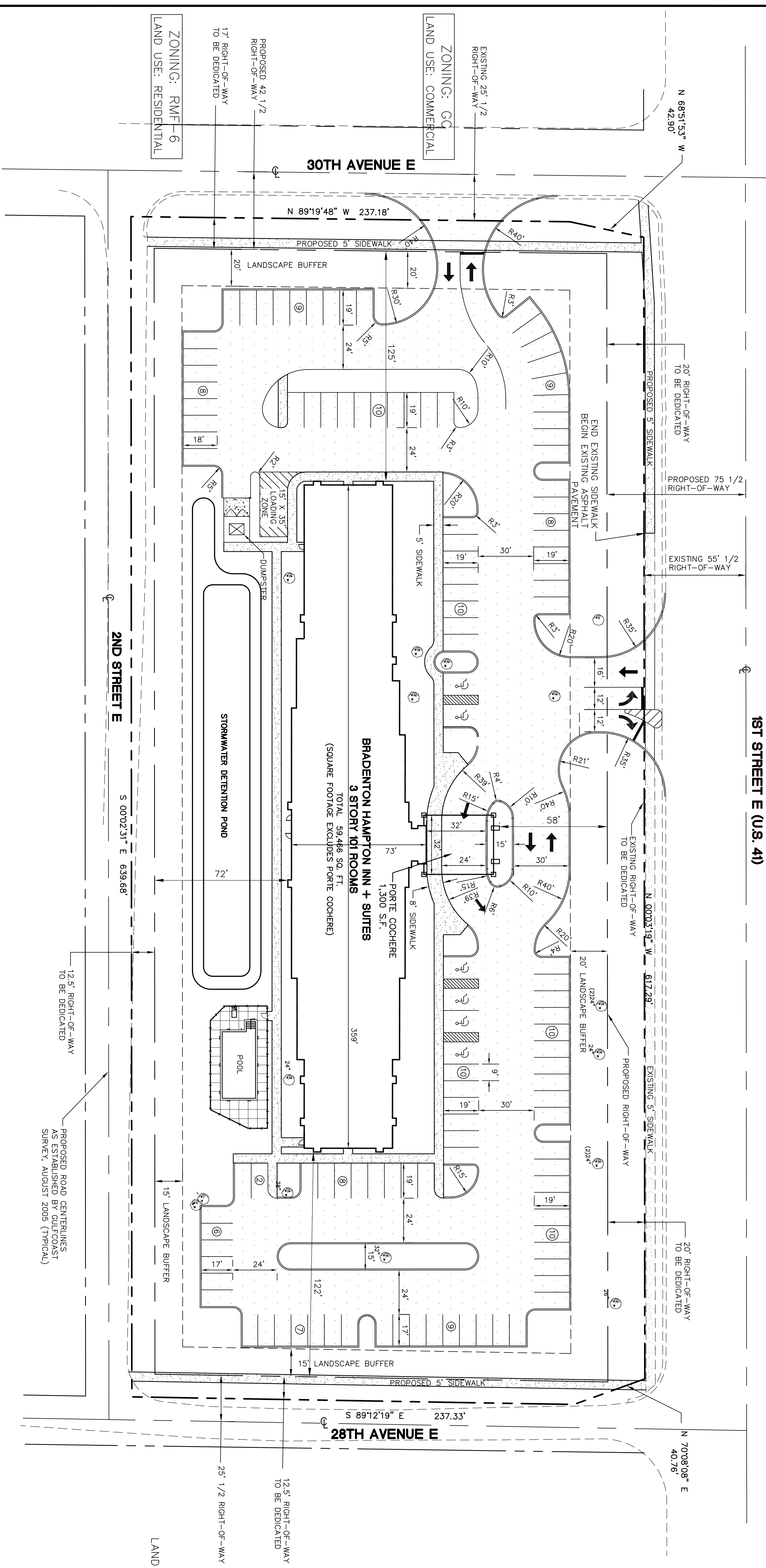
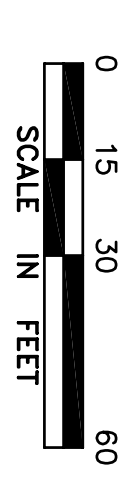
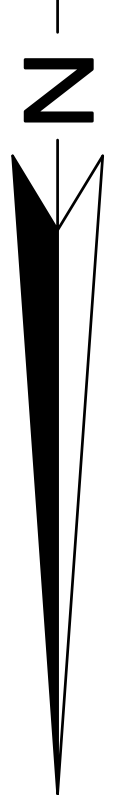


CITY OF BRADENTON
 ZONING: C-3
 LAND USE: COMMERCIAL/RETAIL



- LEGEND**
- PROPOSED CONCRETE SIDEWALK
 - PROPOSED ASPHALT PAVEMENT
 - EXISTING ASPHALT PAVEMENT
 - EXISTING TREES 24" AND GREATER TO REMAIN

**GENERAL DEVELOPMENT
 PLAN / PRELIMINARY
 SITE PLAN**
 FOR
**HAMPTON INN AND SUITES
 AT BRADENTON**

LOMBARDO, FOLEY & KOLARIK, INC.
 Consulting Engineers, Surveyors and Planners
 P.O. Box 988 • 825 4th Street West • Palmello, Florida 34221 • (941) 722-4561

REVISIONS	DATE	BY	DESCRIPTION

PROJECT ENGINEER	ROBERT T. LOMBARDO	DATE	7/2006
DESIGN	JR	SCALE	1"=30'
DRAWN	SC	APPR.	RLL
PE REG. NO.	20528	JOB NO.	7511